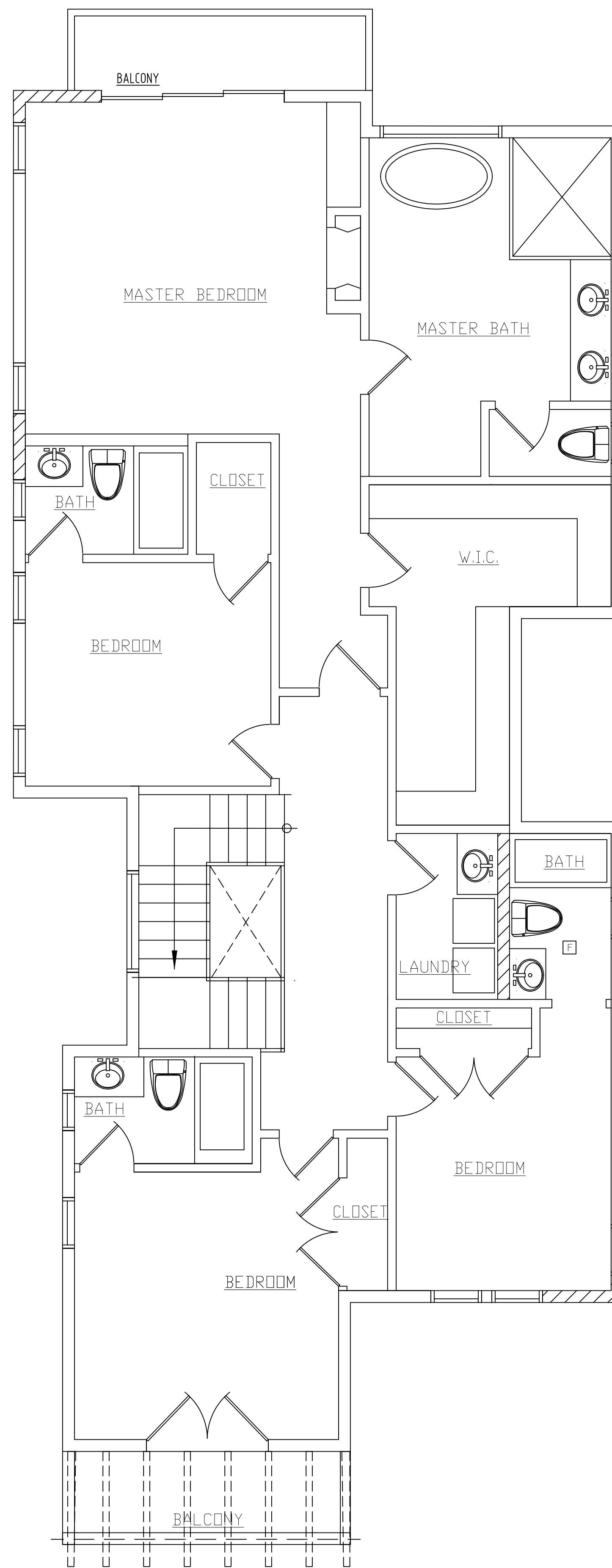


$78.12-15.12 = 63$ S.F. STAIRS
 $28.75+665.50+49+168.81+78+150+52.91+36+277+95=1601 - 78(\text{STAIRS \& OPEN}) = 1,523.00$

SECOND FLOOR AREA

1/4"=1'-0"



SECOND LEVEL FLOOR PLAN

1/4"=1'-0"